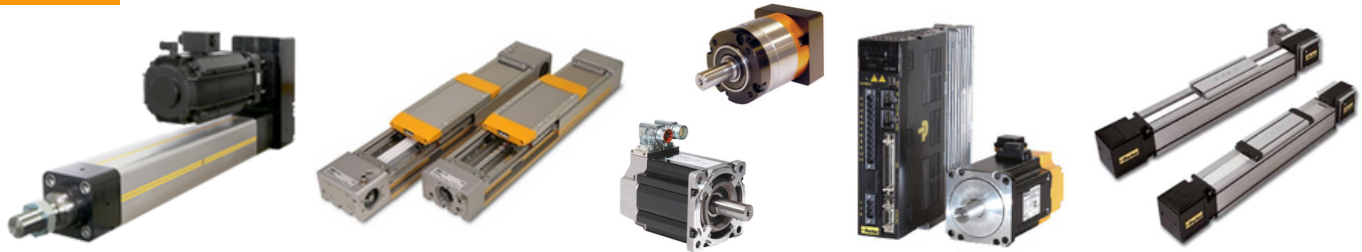


We specialize in the application, sales and support of motion control, automation and process control products to service forward-looking companies in the industrial marketplace. Our objective is to help you select and apply commercially available products from leading manufacturers to successfully solve your unique automation application.



Single/Multi-Axis Motion Control, Servo and Stepper Drives and Motors, Linear and Direct Drive Rotary Positioners, HMI/SCADA/PLant Floor Displays



High Performance Multi-Axis Motion Controllers and Ethernet I/O Controllers



Industrial Computers, Human Machine Interfaces, Data Acquisition Modules



Stepper and Servo Motors, and Drive/Controllers, Integrated Stepper Motors



**Pro-face**  
for the best interface

Touchscreen Operator Interfaces, Industrial Computers, PLC Integrated HMI



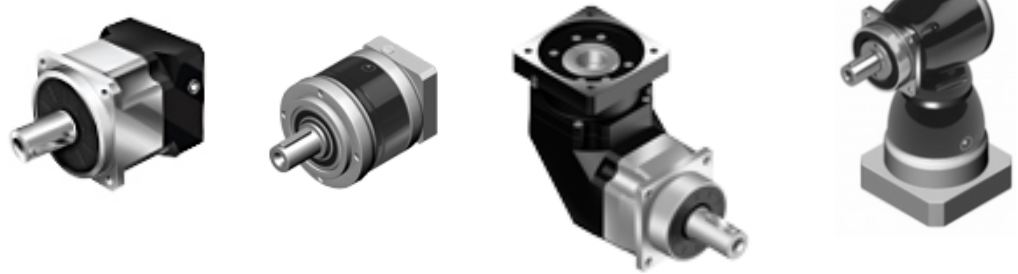
**UNIMOTION**

Ballscrew, Belt Driven, and Linear Motor Actuators, Electric Cylinders



 **APEX DYNAMICS, USA**

Precision Planetary In-Line and Right Angle Gearheads



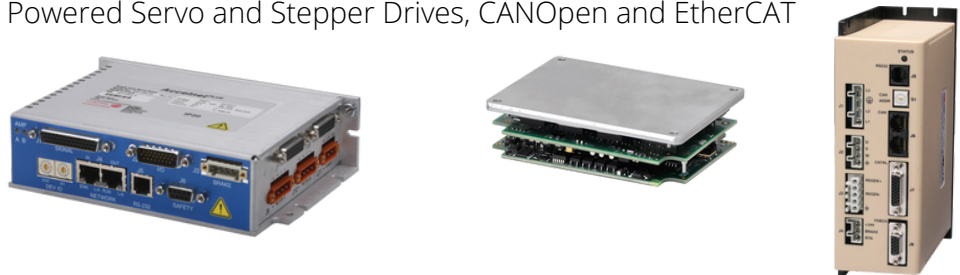
**CIMON**  
A U T O M A T I O N

PLCs/ HMIs/ Hybrid Units/ IPCs and SCADA



**copley**  
**controls**

AC and DC Powered Servo and Stepper Drives, CANOpen and EtherCAT



**ZERO-MAX**  
MOTION CONTROL PRODUCTS

Shaft Couplings, Torque Limiters, and Unique Solutions for Misalignment



Quicksilver Controls, Inc.



Intelligent Servo Control for Microstep Motors and the new Mosolver



Incremental and Absolute Rotary Encoders, and Linear Solutions



Intelligent Motion Systems: Integrated Stepper and Hybrid Servo Motors and Controls

